

810 0/A MODULAR GUARD BOOTH

(8' x 10' ACTUAL SIZE)

NEW JERSEY DESIGN CODES

2006 INTERNATIONAL BUILDING CODE W/ NJ AMENDMENTS
 2006 INTERNATIONAL MECHANICAL CODE W/ NJ AMENDMENTS
 2006 NATIONAL STANDARD PLUMBING CODE W/ NJ AMENDMENTS
 2008 NATIONAL ELECTRICAL CODE W/ NJ AMENDMENTS
 2004 ASHRAE 90.1 W/ NJ AMENDMENTS
 NEW JERSEY BARRIER FREE SUBCODE

DESIGN LIVE LOADS

FLOOR: 50 PSF LIVE LOAD
 10 PSF DEAD LOAD

ROOF: 40 PSF LIVE LOAD
 10 PSF DEAD LOAD

CONSTRUCTION TYPE: 5B
 OCCUPANCY/USE GROUP: B
 BUILDING AREA: 80 SQ FT.
 MINIMUM BUILDING
 SET BACK: GREATER THAN 10 FEET TO A
 COMMON OR ASSUMED PROPERTY LINE

SEISMIC ZONE: GROUP I, CATEGORY C
 MAXIMUM WIND LOAD: 90 MPH, EXPOSURE C
 OCCUPANT LOAD: 1

DRAWING INDEX

DRAWING NUMBER	DESCRIPTION
#1	SPECIFICATIONS
#2	ELEVATIONS
#3	FLOOR / ELECTRICAL PLAN & PLUMBING SCHEMATICS
#4	CROSS SECTION / BLOCKING POINTS PLAN

SPECIAL LIMITATIONS:

ADEQUATE HANDICAPPED RESTROOM FACILITIES TO HANDLE THE ADDITIONAL OCCUPANT LOAD CREATED BY THE ADDITION OF THIS BUILDING TO A SITE SHALL BE PROVIDED IN AN ADJACENT BUILDING ON THE SAME PROPERTY. THE LOCAL OFFICIAL HAVING JURISDICTION SHALL VERIFY THE EXISTING FACILITIES.

BUYERS APPROVAL SIGN AND DATE:

TITLE: COVER SHEET
 MODEL: 810 0/A GUARD BOOTH

DRAWN BY: R.M.
 REV:

TWIN MODULAR SERVICES, INC.
 1001 LOWER LANDING RD, SUITE 607, BLACKWOOD, NJ 08012

DATE: 5/3/10
 SCALE: NTS

JOB NO: 2010-104
 DRAWING NO: CVR

✓ ACCEPTED

✗ REJECTED

CHASSIS

TYPE: PERIMETER
MAIN BEAM: 6" JR. I-BEAM (4.4 lbs PER FT.)
CROSS MEMBERS: 6" JR. I-BEAM @ 24" O.C.
PAINT: ASPHALT BASED
OPTIONAL: 6" "C" CHANNEL 8.5 lbs PER FT.

FLOOR

INSULATION: NONE
DECKING: SEE COVERING
OPTIONAL: 1/4" STEEL PLATE FLOOR W/ NON-SKIP EPOXY PAINT
COVERING: 1/8 ALUMINUM DIAMOND (TREAD) PLATE
TRIM: 4" VINYL COVE BASE
MOISTURE BARRIER: TYVEK OR EQUAL
OPTION: R-19 RIGID FLOOR INSULATION

EXTERIOR WALLS

STUDS: 2"x4" STUD GRADE SPF @ 16" O.C.
BOTTOM PLATE: SINGLE 2"x4" #3 SPF
TOP PLATE SINGLE 2"x4" #3 SPF
WALL HEIGHT: 8'-3"
FINISHED CEILING HT: 7'-8" A.F.F.
INSULATION: R-13 FIBERGLASS KRAFT-BACKED BATTS
INT. WALL COVERING: 1/4" VINYL COVERED PANEL (CLASS III)
INT. WALL COVERING OPTION: 1/2" VINYL COVERED GYP. (CLASS I)

ROOF

TYPE: RAFTER, 2x6 WOOD @ 16" O.C.
STANDARD OPTIONAL: 3" OVERHANG ALL SIDES ROOF NOT TO EXCEED 102"
CEILING: 2'x4' T-GRID DROP CEILING @ 7'-8" A.F.F.
INSULATION: R-13 KRAFT FACED FIBERGLASS BATTS
OPTION: 3" OVERHANG ROOF NOT TO EXCEED 102"
OPTION: 2"X8" BOW TYPE ROOF WITH R-30 INSULATION

ELECTRICAL

MAIN DISTRIBUTION PANEL: EXTERIOR (WEATHERPROOF) 100 AMP 120/240 VOLT SINGLE PHASE, 3 WIRE, 60 HZ. WITH GROUND
RACEWAY: MINIMUM #14/2 W/ GROUND 90 DEG. C. TYPE MC, COPPER
INTERIOR LIGHTS: 2'x4' TWO TUBE LAY-IN FLUORESCENT TROFFER PER PRINT
EXTERIOR LIGHTS: 150 WATT QUARTZ HALOGEN SECURITY LIGHT (WEATHERPROOF)
SWITCHES: 120 V. 15 AMP SINGLE POLE PER PRINT
RECEPTACLES: 120 V. 15 AMP DUPLEX RECEPPTS PER PRINT

H.V.A.C.

HEATING: 220V, DEDICATED CIRCUIT, 20 AMP, 3000 WATT WALL HEATER WITH FAN
AIR CONDITIONING: 110V, DEDICATED CIRCUIT, 8000 BTU WALL MOUNT,
OPTION: 11,600 HEAT / AIR CONDITIONER COMBINATION UNIT, WALL MOUNTED

EXTERIOR WINDOWS & DOORS

DOORS: 36" X 80" STEEL DOOR WITH 22" X 36" VISION, CLOSURE AND LOCKSET
OPTION: 36"x80" STEEL DOOR W/ 22"x30" WINDOW (S.G.), CLOSER
OPTION: 36"X80" HEAVY DUTY STEEL SLIDING DOOR WITH 22"X22" VISION AND LOCK

WINDOWS: ALL WINDOWS TO BE TEMPERED GLAZING - 3 SLIDING AND 3 FIXED NON OPERABLE TYPE WITH NON CORROSIVE WHITE VINYL TRIM

WINDOWS: 3 - 36"x39" HORIZONTAL SLIDER, VINYL THERMAL INSULATED WINDOWS

OPTION: (1) 24"x36" CLEAR TEMPERED GLASS TICKET WINDOW WITH STAINLESS STEEL SHELF, SPEAK-THRU & 1/2 ROUND TICKET SERVICE

WINDOWS: 3 36"x39" PICTURE WINDOW - NON OPERABLE, THERMAL PANE DIG GLAZING W/ VINYL FRAME OR SINGLE GLAZING, MILL FINISH FRAME

OPTION: TINT ALL WINDOWS

EXTERIOR FINISHES

SIDING: .019 ALUMINUM - LITE GRAY
TRIM: .019 ALUMINUM - DARK GRAY
WALL SHEATHING: 7/16" OSB OR CDX PLYWOOD, 16/0 SPAN INDEX RATING
ROOF SHEATHING: 1/2" CDX PLYWOOD, 16/0 SPAN RATING
ROOF: .45 EPDM RUBBER ROOFING

FURNITURE

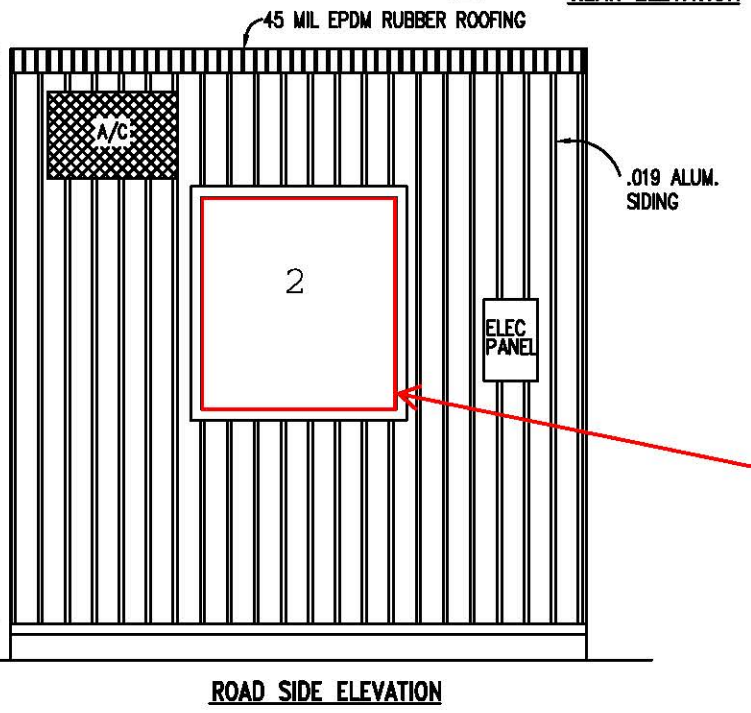
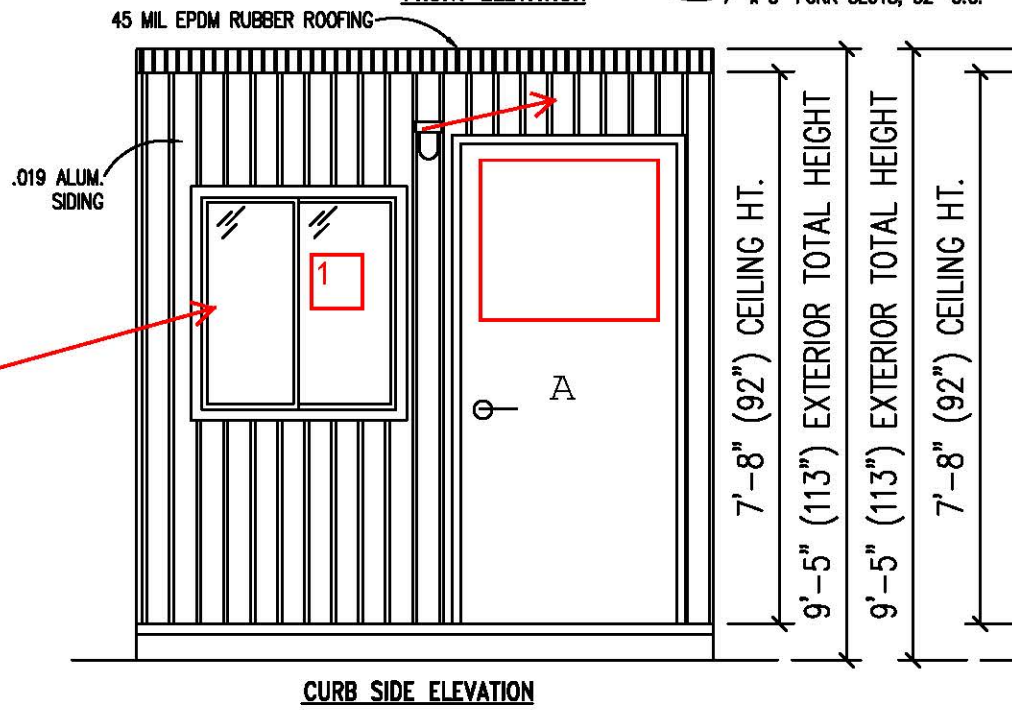
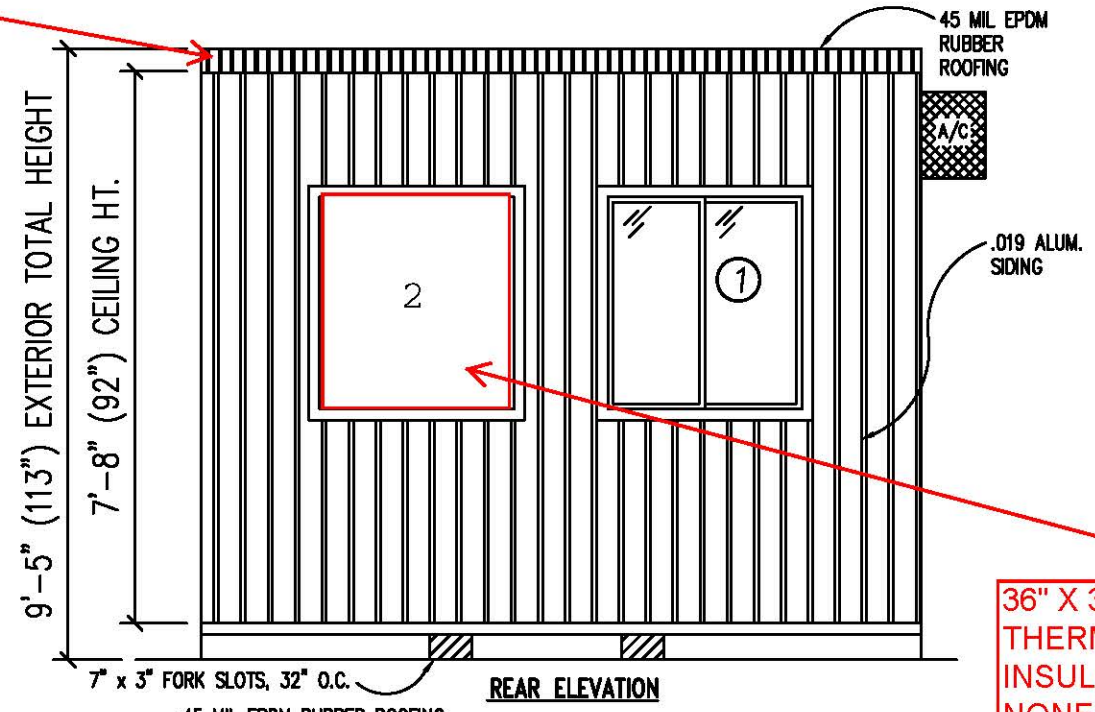
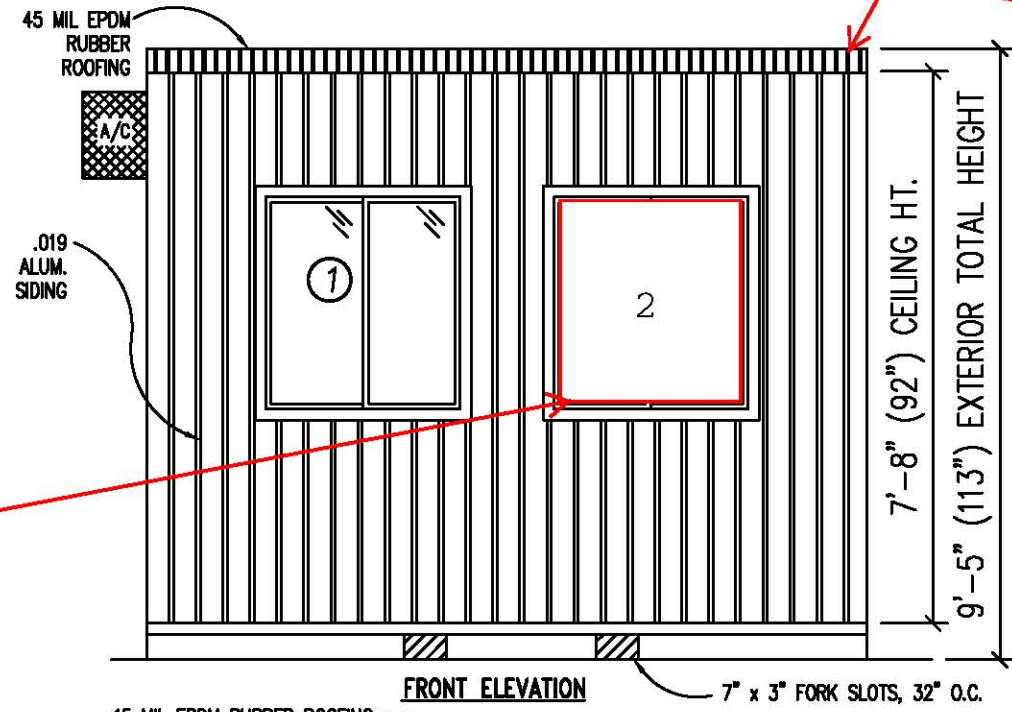
2'-0" x 7'-4" COUNTER TOP - WHITE MICA

BUYERS APPROVAL SIGN AND DATE:

[Redacted signature box]

TITLE: SPECIFICATIONS	DATE: 5/3/10	JOB NO: 2010-104
MODEL: 810 O/A GUARD BOOTH	SCALE: NTS	DRAWING NO: 1
TWIN MODULAR SERVICES, INC. 1001 LOWER LANDING RD, SUITE 607, BLACKWOOD, NJ 08012		
DRAWN BY: R.M.		
REV:		

3" OVERHANG
ALL SIDES



36" X 39"
THERMAL
INSULATED
NONE OPERABLE
FIXED WINDOW

36" X 39"
THERMAL
INSULATED
NONE OPERABLE
FIXED WINDOW

36" X 39"
THERMAL
INSULATED
HORIZONTAL
SLIDING WINDOW

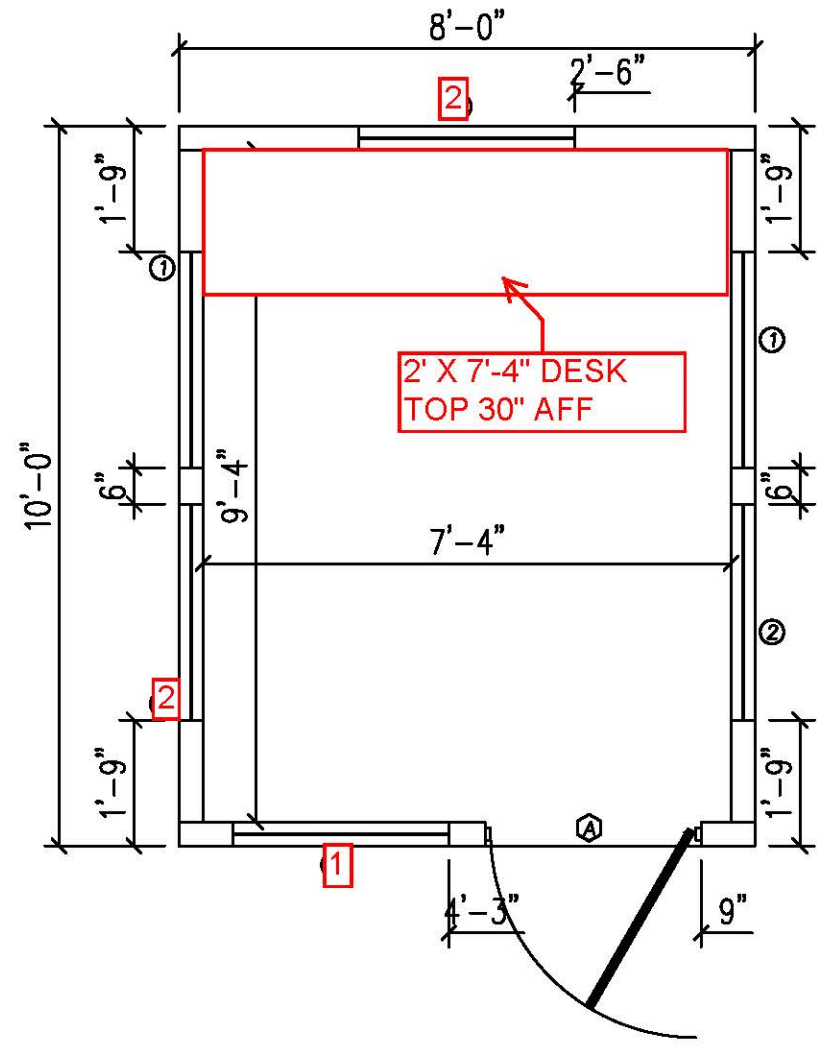
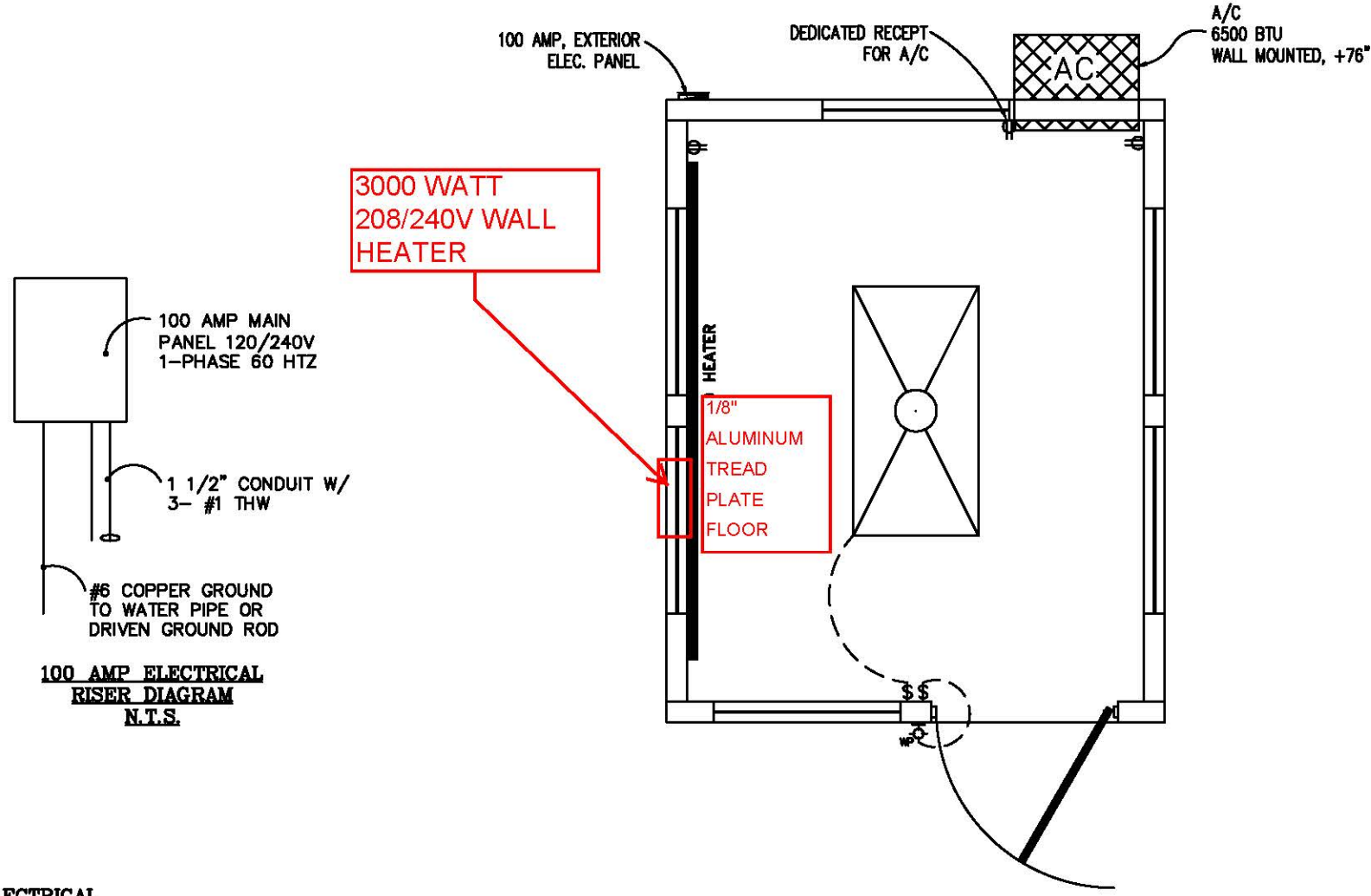
36" X 39"
THERMAL
INSULATED
NONE OPERABLE
FIXED WINDOW

DOOR AND WINDOW SCHEDULE

- Ⓐ 36" X 80" STEEL DOOR WITH 22" X 22" VISION, CLOSURE AND LOCKSET
- ① 36" X 39" THERMAL INSULATED HORIZONTAL SLIDING WINDOW
- ② 36" X 39" THERMAL INSULATED NONE OPERABLE FIXED WINDOW

BUYERS APPROVAL SIGN AND DATE:

TITLE: ELEVATIONS	DRAWN BY: R.M.	DATE: 5/3/10	JOB NO: 2010-104
MODEL: 810 O/A GUARD BOOTH	REV:	SCALE: 1/4"=1'-0"	DRAWING NO: 2
TWIN MODULAR SERVICES, INC. 1001 LOWER LANDING RD, SUITE 607, BLACKWOOD, NJ 08012			



ELECTRICAL

1. ALL RECEPTACLES TO BE GROUNDING TYPE.
2. ALL WIRING TO BE PER THE EDITION OF THE NEC LISTED ON THE COVER PAGE, TYPE NM ROMEX (CU) W/ GROUND.
3. MAIN PANEL TO BE MARKED "SUITABLE FOR USE AS SERVICE EQUIPMENT", AND BE EQUIPPED W/ BREAKER/FUSE TYPE OVERCURRENT PROTECTION.
4. PROPER THERMAL OVERLOAD PROTECTION TO BE PROVIDED FOR ALL MOTORS.
5. DISCONNECTING MEANS WITHIN SIGHT REQUIRED FOR ALL MOTORS.
6. WEATHERPROOF PROTECTION REQUIRED FOR ALL OUTDOOR LIGHTS, RECEPTACLES AND DISCONNECTS.
7. PROPER WORKING CLEARANCES TO BE PROVIDED AND MAINTAINED ABOUT ALL ELECTRICAL EQUIPMENT.
8. ALL FLUORESCENT FIXTURES REQUIRE THERMAL PROTECTION AND PROPER CLEARANCES FROM INSULATION, ALSO APPLICABLE FOR INCANDESCENT FIXTURES.
9. COMBINATION EXHAUST FAN/LIGHT AND ALL RECESSED INCANDESCENT FIXTURES TO BE WITH THERMAL PROTECTION.
10. EXIT LIGHTS (IF ELECTRIC) MUST BE FED FROM AN APPROVED EMERGENCY SERVICE CONNECTED AHEAD OF, BUT NOT WITHIN MAIN SERVICE DISCONNECTION MEANS ENCLOSURE, AND INSTALLED AS PER SERVICE REQUIREMENTS, OR BE BATTERY BACKUP TYPE UNITS.
11. SERVICE CONDUCTORS, LOCATED WITHIN THE PERIMETER OF THE BUILDING, SHALL BE INSTALLED IN ACCORDANCE WITH ARTICLE 230-6, PER THE EDITION OF THE NEC LISTED ON THE COVER PAGE.
12. MAXIMUM 15 (2) TUBE FLUORESCENT LIGHTS ON 15A CIRCUIT, MAXIMUM 10 RECEPTS ON 15A CIRCUIT, MAXIMUM 7 (4) TUBE FLUORESCENT LIGHTS ON 15A CIRCUIT.
13. MAXIMUM 20 (2) TUBE FLUORESCENT LIGHTS ON 20A CIRCUIT, MAXIMUM 13 RECEPTS ON 20A CIRCUIT, MAXIMUM 10 (4) TUBE FLUORESCENT LIGHTS ON 20A CIRCUIT.

ELECTRICAL LEGEND

- 2'x4' (4) TUBE DROP-IN FLUORESCENT LIGHT
- 100A 120/240V MAIN PANEL, SURFACE MOUNTED EXTERIOR
- 15A 110V SINGLE POLE TOGGLE SWITCH +48"
- 15A 120V DUPLEX RECEPTACLE (RECEPTS AT +34" UNLESS NOTED)
- 150 WATT QUARTZ HALOGEN SECURITY LIGHT, WEATHERPROOF
- 208/220 VOLT 3000 WATT WALL HEATER

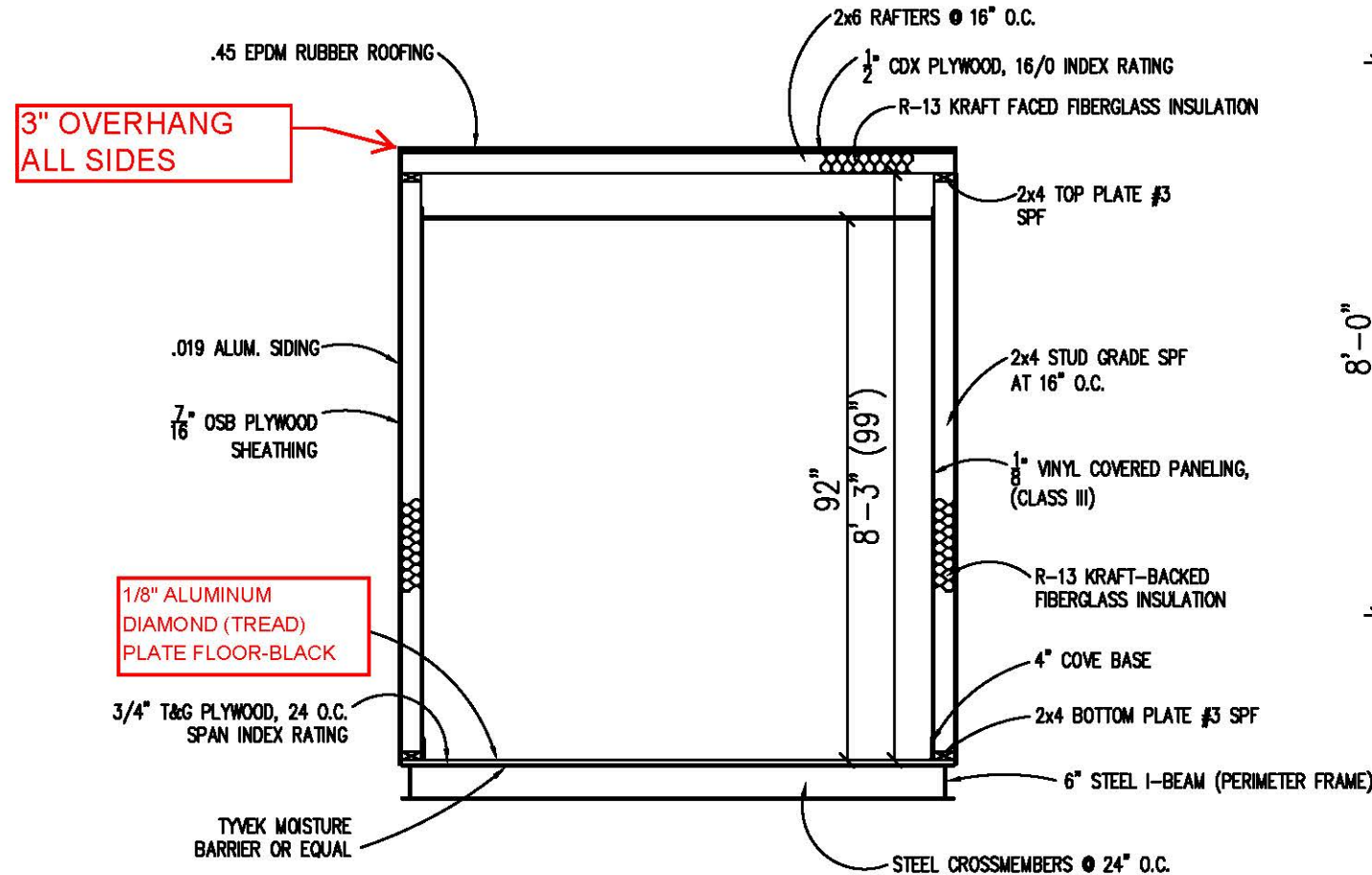
**AMPACITIES OF INSULATED CONDUCTORS
90°C WIRE COPPER**

AWG	MAXIMUM AMPACITY
14	15 AMP
12	20 AMP
10	30 AMP
8	50 AMP
6	65 AMP
4	85 AMP
3	100 AMP
2	115 AMP
1	130 AMP

DOOR AND WINDOW SCHEDULE

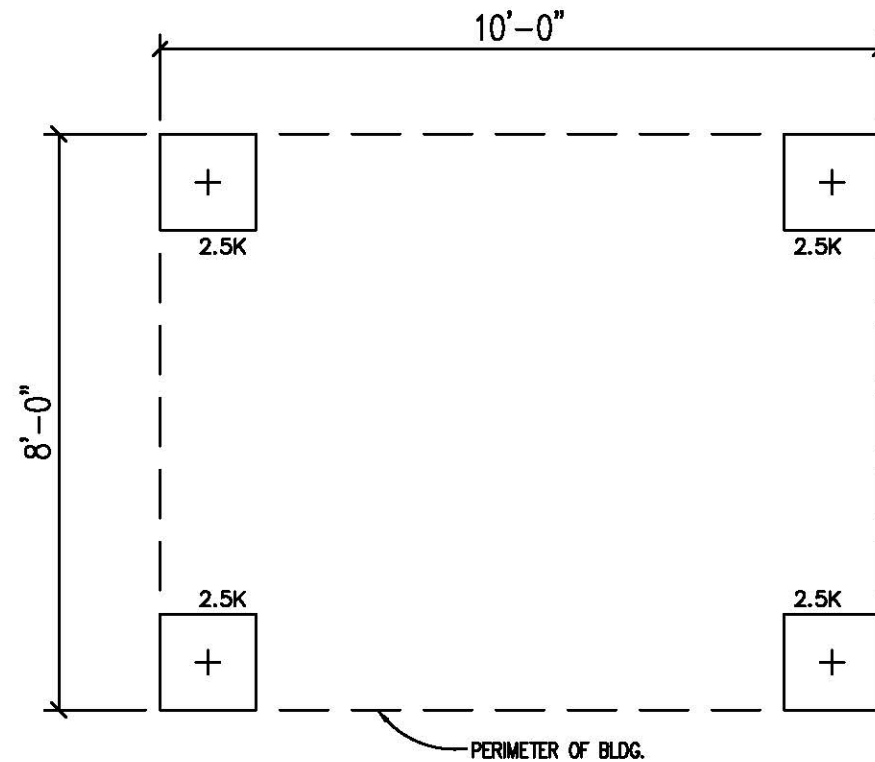
- A 36" X 80" STEEL DOOR WITH 22" X 22" VISION, CLOSURE AND LOCKSET
- 1 36" X 39" THERMAL INSULATED HORIZONTAL SLIDING WINDOW
- 2 36" X 39" THERMAL INSULATED NONE OPERABLE FIXED WINDOW

BUYERS APPROVAL SIGN AND DATE:



3" OVERHANG
ALL SIDES

1/8" ALUMINUM
DIAMOND (TREAD)
PLATE FLOOR-BLACK



FOUNDATION & TIE-DOWN DESIGN BY OTHERS

BUILDING CODE

1. ATTIC VENTILATION SHALL NOT BE LESS THAN 1/150th OF THE HORIZONTAL AREA TO BE VENTILATED.
2. THE BUILDING EXTERIOR AND ALL FACILITIES WITHIN THE BUILDING SHALL BE IDENTIFIED WITH THE INTERNATIONAL SYMBOL OF ACCESSIBILITY.
3. OWNER/BUYER SHALL BE RESPONSIBLE FOR ON SITE BARRIER FREE PROVISIONS: STEPS, RAMPS, PARKING SIGNS, ETC. - BUILDING APPROACH (WALK OR RAMP) WITH A MINIMUM WIDTH OF 5' AND A GRADIENT OF NOT MORE THAN 1 FOOT IN 20 FEET.
4. ALL LOCKS TO BE UNLOCKABLE FROM THE INTERIOR WITHOUT THE USE OF A KEY OR SPECIAL KNOWLEDGE.
5. CORROSION RESISTANT FLASHING AT TOP AND SIDES OF DOORS, WINDOWS AND AT ROOF PENETRATIONS.
6. ALL GLAZING WITHIN 24" OF EXTERIOR PASSAGE DOORS AND IN PASSAGE DOORS, OR WITHIN 18" OF FLOOR TO BE "SAFETY GLAZED" AND SO MARKED.

FOUNDATION

1. THE PIER LOCATIONS SHOWN ON THIS PLAN ARE FOR THE PURPOSE OF IDENTIFYING THE LOCATION OF THE REQUIRED BLOCKING POINTS AND THE LOADS APPLIED AT EACH POINT FOR THIS BUILDING. FOUNDATION REQUIREMENTS ARE NOT KNOWN DUE TO VARYING SOIL CONDITIONS.
2. FOUNDATION DESIGN IS BY OTHERS. FOUNDATION REVIEW AND APPROVAL IS TO BE PERFORMED BY THE LOCAL OFFICIAL HAVING JURISDICTION.
3. CRAWL SPACE TO BE VENTILATED AT 1 SQ. FT. PER EACH 150 SQ. FT. OF CRAWL SPACE AREA TO BE VENTILATED.
4. PROVIDE POSITIVE DRAINAGE UNDER UNIT.
5. PROVIDE MINIMUM CRAWL SPACE ACCESS OF 22" x 24".
6. MINIMUM FOOTING DEPTH OF BELOW FROSTLINE AND PER LOCAL CONDITIONS.
7. PIER LOADS ARE SHOWN IN KIPS
8. 90 MPH WIND SPEED, EXPOSURE C
9. UNIT MAY BE SHIMMED AS NECESSARY WITH HARDWOOD SHIMS BETWEEN TOP OF PIER AND MODULAR UNIT FRAME
10. MINIMUM CONCRETE STRENGTH SHALL BE 3,000 PSI AT 28 DAYS

DESIGN LOADS

FLOOR LIVE LOAD	= 50 PSF
FLOOR DEAD LOAD	= 10 PSF
ROOF LIVE LOAD	= 40 PSF
ROOF DEAD LOAD	= 10 PSF
EXTERIOR WALL DEAD LOAD	= 42 PLF

FOUNDATION LEGEND

+ INDICATES BLOCKING TO BOTTOM OF MAIN I-BEAM

BUYERS APPROVAL SIGN AND DATE:

TITLE: CROSS SECTION
MODEL: 810 O/A GUARD BOOTH

DRAWN BY: R.M.
REV:

TWIN MODULAR SERVICES, INC.
1001 LOWER LANDING RD, SUITE 607, BLACKWOOD, NJ 08012

DATE: 5/3/10
SCALE: 1/4"=1'-0"

JOB NO: 2010-104
DRAWING NO: 4